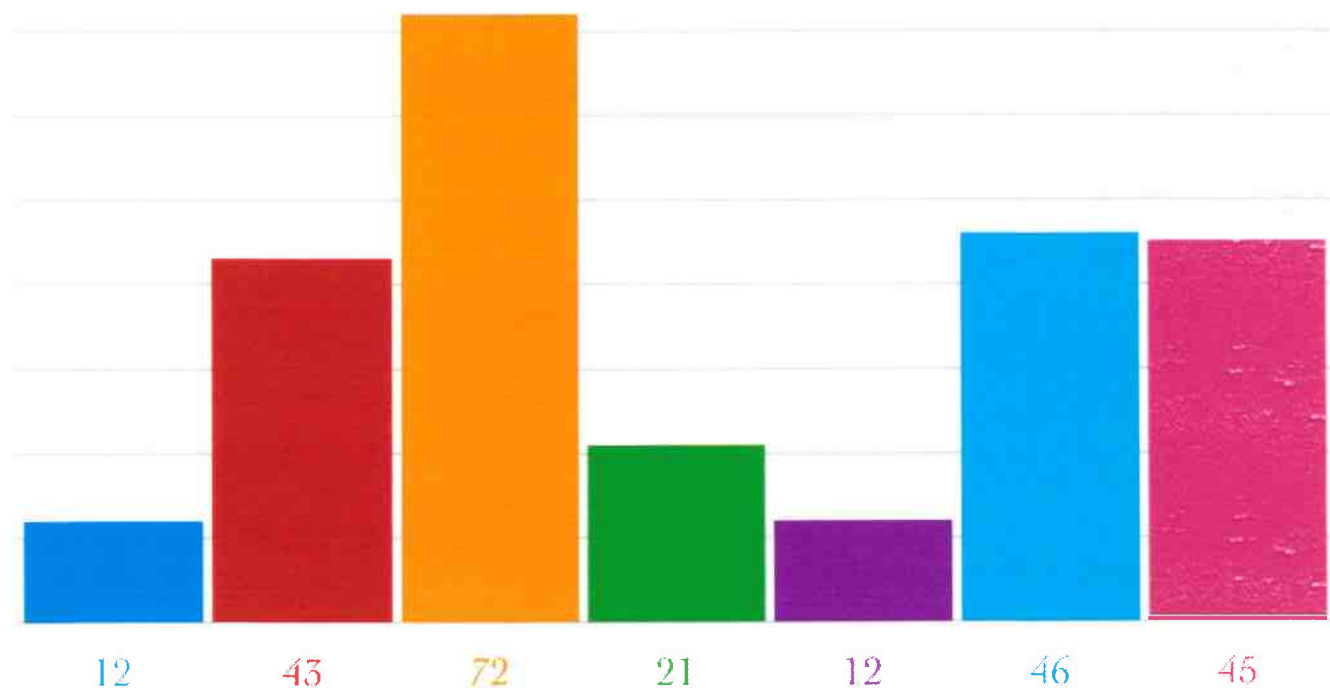


Which of these options are most important to you?

Please check any that apply

Bar



- 12 : Prevention and Mitigation Strategies in School
- 43 : Impact of Learning Loss
- 72 : Well Supported Teachers
- 21 : Rigorous Instructional Materials
- 12 : More Time (extended day, extended year, summer learning, tutoring)
- 46 : Mental Health and Behavioral Supports, Additional Counseling
- 45 : Other Supports (Facilities, Ventilation, Cleaning, Specialized Instruction Spaces, Digital Tools, Educational Application)